

Name: \_\_\_\_\_

Date: \_\_\_\_\_

**Seaman Apprentice Exam**

1. NS1-CFMC1:NQ1  
The uniform your senior naval science instructor (SNSI) will direct you to wear on any given day is known as the
  - A. Uniform of the School
  - B. Uniform of the Navy
  - C. Uniform of the Day
  - D. Designated Uniform
  
2. NS1-CFMC1:NQ3  
What articles/items may be worn exposed when in uniform?
  - A. cell phones
  - B. pens
  - C. watch chains
  - D. no articles may be exposed
  
3. NS1-CFMC1:NQ7  
Which of the following statements is true concerning the female hair?
  - A. The hair may not touch the collar.
  - B. The hair may not touch the female shirt at all.
  - C. The hair may touch, but cannot fall below the horizontal line level with the lower edge of the back of the collar.
  - D. None of the above
  
4. NS1-CFMC1:NQ9  
Which of the following statements is true in the wearing of female earrings/studs?
  - A. One per ear, centered on the ear lobe, must be a small gold or silver ball (post or screw on).
  - B. Two per ear, centered on top of the ear, must be large gold or silver ball (post or screw on).
  - C. Three per ear, centered on the ear lobe, can be of any color or style.
  - D. Earrings/studs are not authorized to be worn with the NJROTC uniform.
  
5. NS1-CFMC1:NQ10  
Male sideburns will be neatly trimmed and tailored and shall not exceed below a point level with the
  - A. lower part of the jaw.
  - B. bottom of the ear lobe.
  - C. top of the ear.
  - D. middle of the ear.

6. NS1-CFMC1:NQ11  
In uniform, necklaces are authorized but shall not be
- A. any color other than gold or silver.
  - B. expensive.
  - C. visible.
  - D. heavy braid.
7. NS1-CFMC1:NQ12  
In uniform, rings are authorized, but no more than \_\_\_\_\_ may be worn on each hand.
- A. one
  - B. two
  - C. three
  - D. four
8. NS1-CFMC1:NQ15  
What color and type tee-shirt will be worn with all male NJROTC uniforms?
- A. Plain black crew neck or V-neck
  - B. Plain white crew neck
  - C. Any white tee-shirt with a design on it
  - D. Any white turtle neck shirt
9. NS1-CFMC1:NQ16  
Rank/rate and the JROTC bar insignias are centered at what distance from the collar point on the male and female short sleeve blue shirt?
- A. 1/4 inch
  - B. 1 and 1/2 of an inch
  - C. 1 and 7/8 of an inch
  - D. 2 and 1/2 of an inch
10. NS1-CFMC1:NQ20  
How is the most senior ribbon worn on the uniform shirt when more than one ribbon is worn?
- A. On the bottom row and outboard
  - B. On the top row and outboard
  - C. On the bottom row and inboard
  - D. On the top row and inboard
11. NS1-CFMC1:OQ25  
How often to NJROTC cadets wear their uniforms?
- A. Daily for 1 period
  - B. Daily
  - C. Weekly for the NJTOTC class
  - D. Once weekly for the entire day

12. NS1-CFMC1:OQ35  
Uniform socks will be.....
- A. clean white socks
  - B. neutral colored and clean
  - C. any color that are clean
  - D. black plain knit or rib knit
13. NS1-CFMC3:NQ2  
The United States flag signifies a people dedicated to
- A. liberty.
  - B. justice.
  - C. freedom for all.
  - D. All of the above.
14. NS1-CFMC3:NQ3  
It is the universal custom to display the United States flag from what start time to what ending time?
- A. Sunrise to sunset
  - B. 0600 to 1200
  - C. 1100 to 1500
  - D. 24 hours a day
15. NS1-CFMC3:NQ7  
What is the preferred method of destroying a flag unfit for public display?
- A. shredding
  - B. burying
  - C. burning
  - D. jettison at sea
16. NS1-CFMC3:NQ10  
When you are in uniform and outdoors and you hear the national anthem played and the flag is not visible, what do you do?
- A. Stand at attention, face the music and render a salute
  - B. Stand at attention, face due North and render a salute
  - C. Nothing, continue doing what you are presently doing
  - D. Stand at parade rest until the music stops, then carry on
17. NS1-CFMC3:NQ13  
What should you do if, while outdoors in civilian clothes, you hear the national anthem but the flag is not visible?
- A. Carry on, as you are not in uniform
  - B. Stand at attention and face in the direction of the music
  - C. Stand at attention and face in the direction of the parade field
  - D. Salute smartly the nearest officer

18. NS1-CFMC3:OQ2  
The National Ensign may be displayed twenty-four hours a day under which of the following situations?
- A. Never
  - B. When properly illuminated during the hours of darkness.
  - C. During the funeral of a former President
  - D. Only with the President's approval
19. NS1-CFMC2:NQ3  
Petty Officer First Class is designated by a collar device of
- A. an eagle perched over one rocker.
  - B. an eagle perched over one chevron.
  - C. an eagle perched over three chevrons.
  - D. an eagle perched over three rockers.
20. NS1-CFMC2:NQ4  
A chevron on a collar device looks like
- A. a rocker on a rocking chair.
  - B. a flat drawing of an Indian tepee.
  - C. half of a link of chain.
  - D. the letter V.
21. NS1-CFMC2:NQ5  
Cadet Senior Chief Petty Officer (C/SCPO) is designated by a collar device of
- A. an eagle perched over three chevrons.
  - B. an eagle and one star perched on a fouled anchor.
  - C. an eagle perched over two chevrons.
  - D. an eagle perched over one chevron.
22. NS1-CFMC2:NQ7  
A cadet Commander is designated by a collar device of
- A. one single gold bar.
  - B. three attached gold bars.
  - C. five attached gold bars.
  - D. five attached gold bars with stars.
23. NS1-CFMC2:NQ8  
A cadet Lieutenant (Junior Grade) is designated by a collar device of
- A. three attached gold bars.
  - B. two attached gold bars.
  - C. five attached gold bars.
  - D. four attached gold bars.

24. NS1-CFMC2:NQ10  
Advancement to officer status requires an individual who has demonstrate superior quality leadership, integrity, personal appearance, conduct and patriotism.
- A. True
  - B. False
25. NS1-CFMC2:NQ11  
Petty Officer Third Class is designated by a collar device of
- A. an eagle perched over one rocker.
  - B. an eagle perched over one chevron.
  - C. an eagle perched over three chevrons.
  - D. an eagle perched over three rockers.
26. NS1-CFMC2:NQ13  
A cadet Lieutenant Commander is designated by a collar device of
- A. two attached gold bars.
  - B. three attached gold bars.
  - C. five attached gold bars.
  - D. four attached gold bars.
27. NS1-CFMC2:NQ14  
A cadet Ensign is designated by a collar device of
- A. three gold bars.
  - B. two gold bars.
  - C. one gold bar.
  - D. one silver bar.
28. NS1-CFMC2:NQ15  
A reduction in rank/grade is based on unacceptable performance and is called a
- A. demerit
  - B. demolition
  - C. demotion
  - D. deduction
29. NS1-CFMC2:NQ16  
A cadet seaman recruit can expect, when qualified, to be advanced to
- A. Cadet Seaman
  - B. Cadet Seaman Apprentice
  - C. Cadet Petty Officer
  - D. Cadet Blue Jacket

30. NS1-DMC2:NQ1  
At the position of Parade Rest
- A. your right hand touches your back below the belt area.
  - B. your right hand is inside your left hand behind your back.
  - C. your left foot has moved 15 inches to the left.
  - D. your left hand loosely holds the thumb of the right hand.
31. NS1-DMC2:NQ2  
When the command "ATTENTION" is given, you turn your feet out equally to form an angle of how many degrees?
- A. 15 Degrees
  - B. 25 Degrees
  - C. 35 Degrees
  - D. 45 Degrees
32. NS1-DMC2:NQ3  
When the command "PARADE, REST" is given, what action is taken concerning your feet?
- A. Move your left foot smartly 12 inches to the left.
  - B. Move your right foot smartly 12 inches to the right.
  - C. Relax your legs but keep your weight on the left foot.
  - D. Relax your legs but keep your weight on the right foot.
33. NS1-DMC2:NQ4  
Which one of the following commands can only be given when you are at parade rest?
- A. AT EASE
  - B. FALL OUT
  - C. DISMISSED
  - D. ATTENTION
34. NS1-DMC2:NQ7  
When you are at "EYES RIGHT," your head is turned smartly to the right and you look at a
- A. 15 degree angle.
  - B. 30 degree angle.
  - C. 45 degree angle.
  - D. 60 degree angle.
35. NS1-DMC2:NQ10  
Which one of the following commands is given that allows you to leave your place in ranks but you remain nearby?
- A. FALL IN
  - B. FALL OUT
  - C. DISMISSED
  - D. PARADE REST

36. NS1-DMC2:NQ14

What is the command given to return to the position of attention when you are at "EYES RIGHT?"

- A. READY, TWO
- B. EYES, FRONT
- C. READY, FRONT
- D. EYES, FORWARD

37. NS1-DMC2:NQ19

When at the halt, the command to march forward taking 30-inch steps is

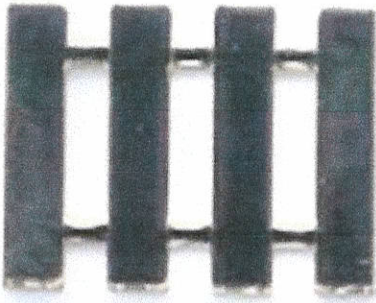
- A. FORWARD, MARCH.
- B. QUICK TIME, MARCH.
- C. DOUBLE TIME, MARCH.
- D. None of the above.

38. (LE2-C5S5T4:TQ1) Cadet Lieutenant Commander

A.



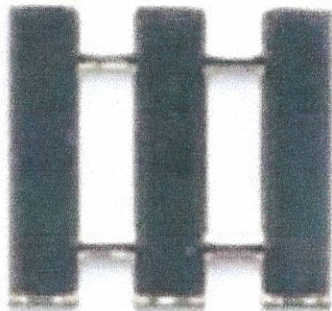
B.



C.



D.

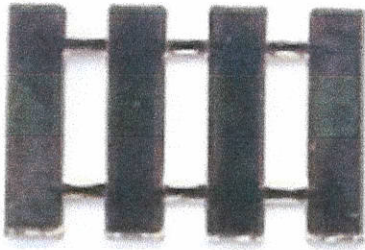


39. (LE2-C5S5T4:TQ2) Cadet Chief Petty Officer

A.



B.



C.



D.

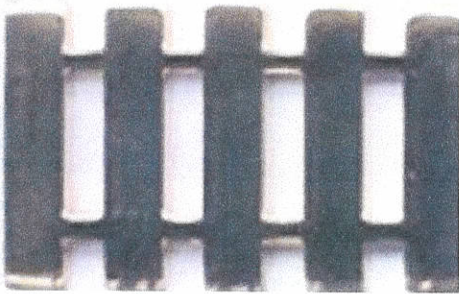


40. (LE2-C5S5T4:TQ3) Cadet Petty Officer First Class

A.



B.



C.

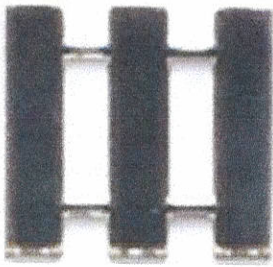


D.

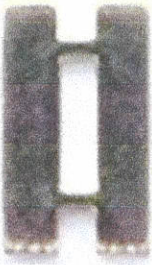


41. (LE2-C5S5T4:TQ4) Cadet Senior Chief Petty Officer

A.



B.



C.



D.

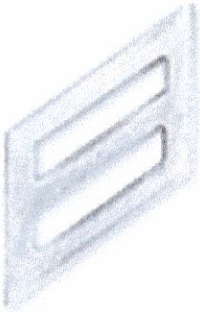


42. (LE2-C5S5T4:TQ5)  
Cadet Seaman Apprentice

A.



B.



C.



43. (LE2-C5S5T4:TQ6)  
Cadet Ensign

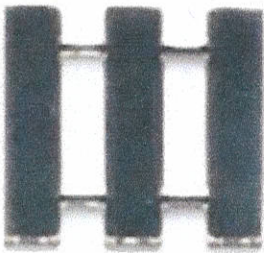
A.



B.



C.



44. (LE2-C5S5T4:TQ7)  
Cadet Petty Officer Third Class

A.



B.

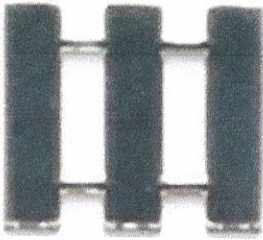


C.

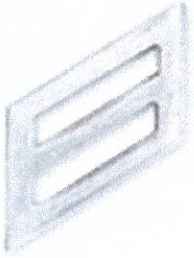


45. (LE2-C5S5T4:TQ8)  
Cadet Lieutenant

A.



B.



C.



46. (LE2-C5S5T3:TQ1) Ensign 0-1

A.



B.



C.



D.



47. (LE2-C5S5T3:TQ4) Seaman E-3

A.



B.



C.



D.



48. (LE2-C5S5T3:TQ5) Petty Officer First Class E-6

A.



B.



C.



D.



49. (LE2-C5S5T3:TQ8) Lieutenant 0-3

A.



B.



C.



D.



50. (LE2-C5S5T3:TQ12) Master Chief Petty Officer E-9

A.



B.



C.



D.

